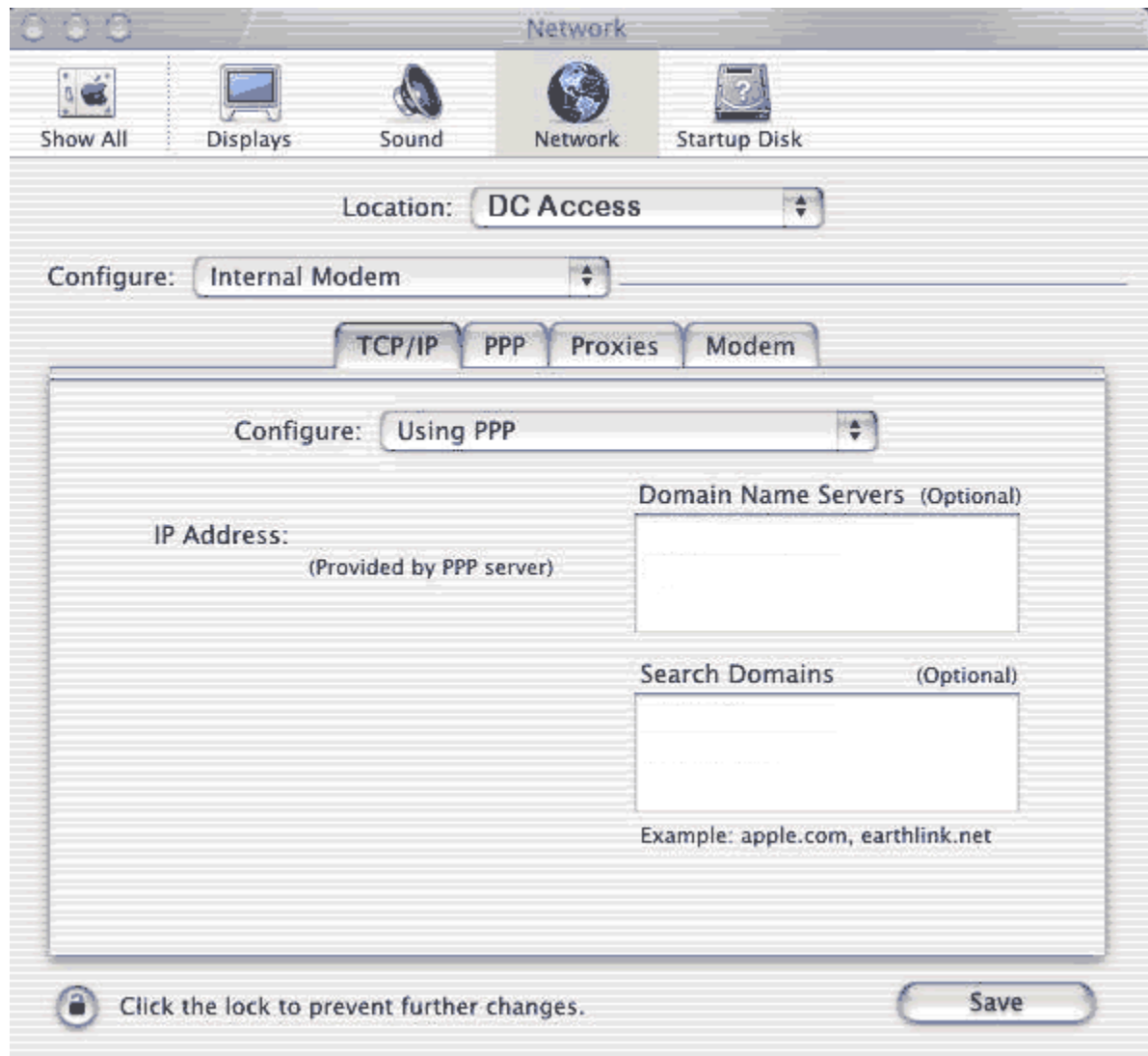


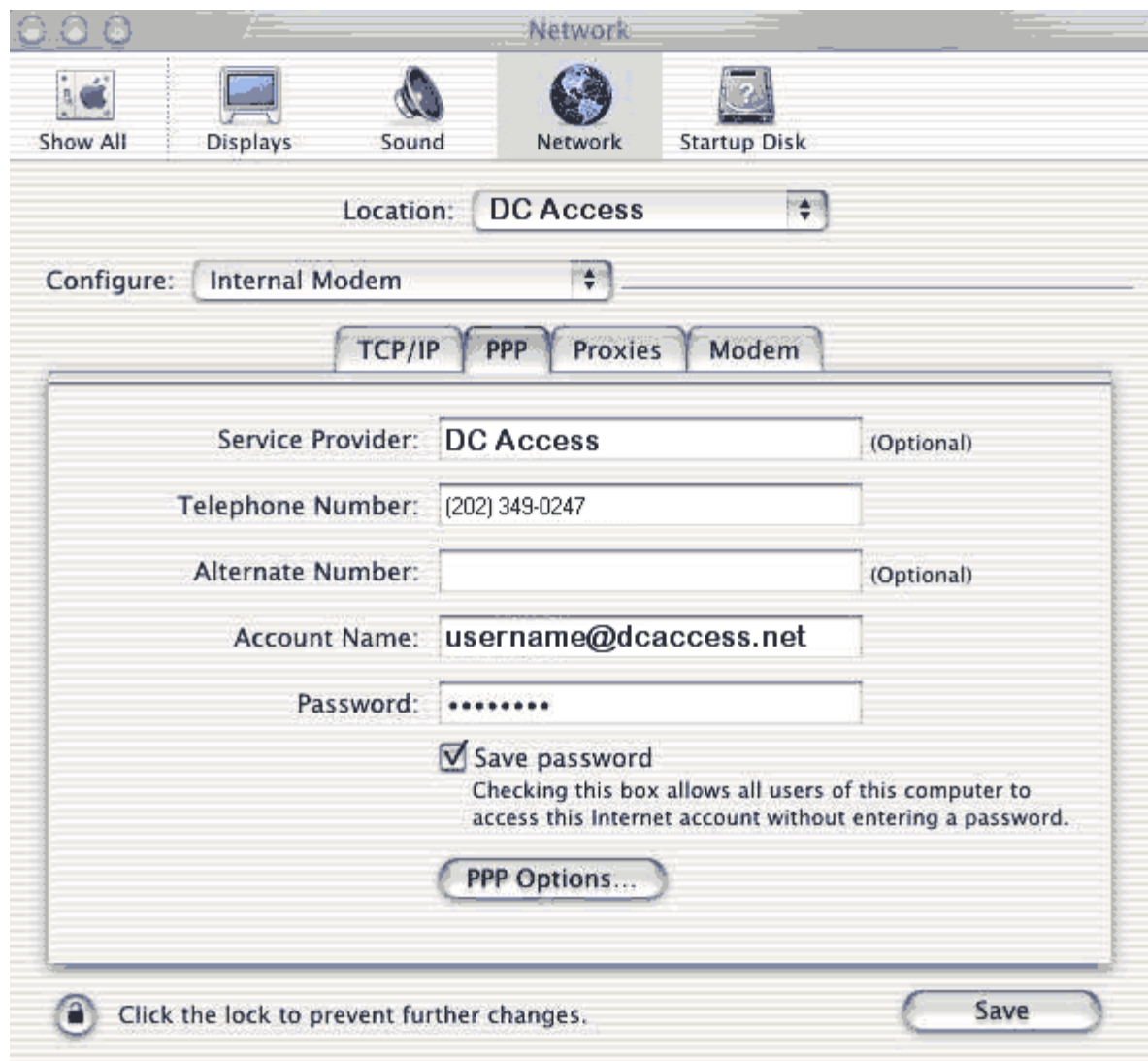
MAC OS X Setup for DC Access

Configuring Network control panel for Modem Dialup

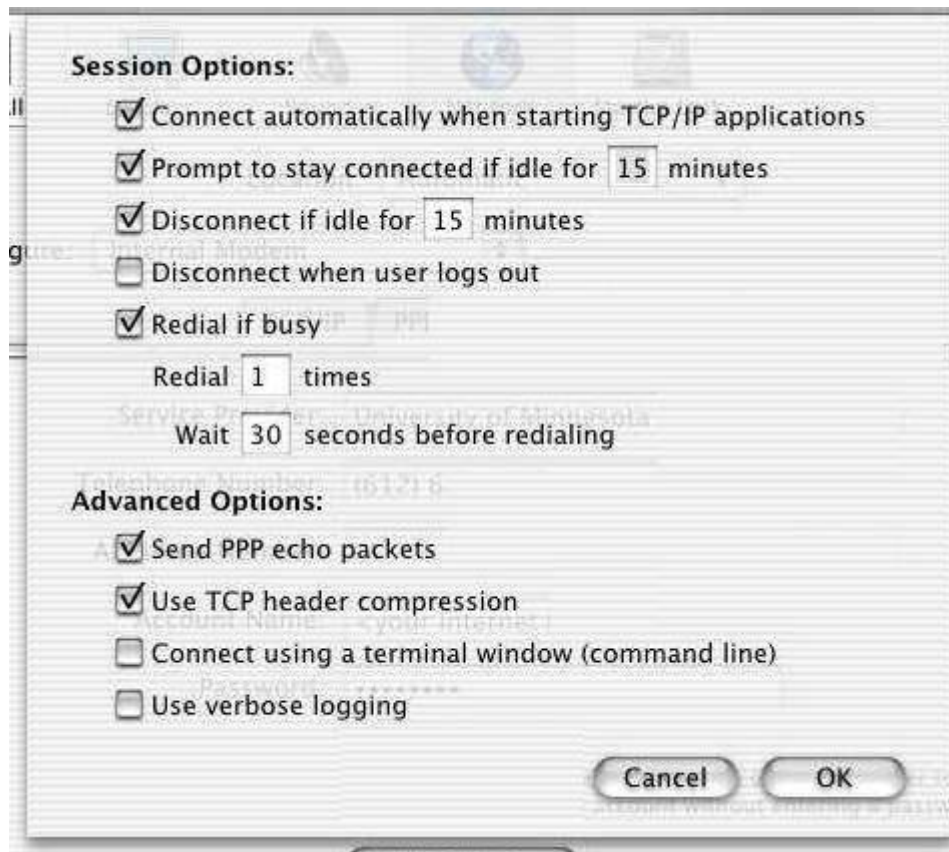
1. Go to the **Apple menu**, choose **System Preferences...**, and choose **Network**.



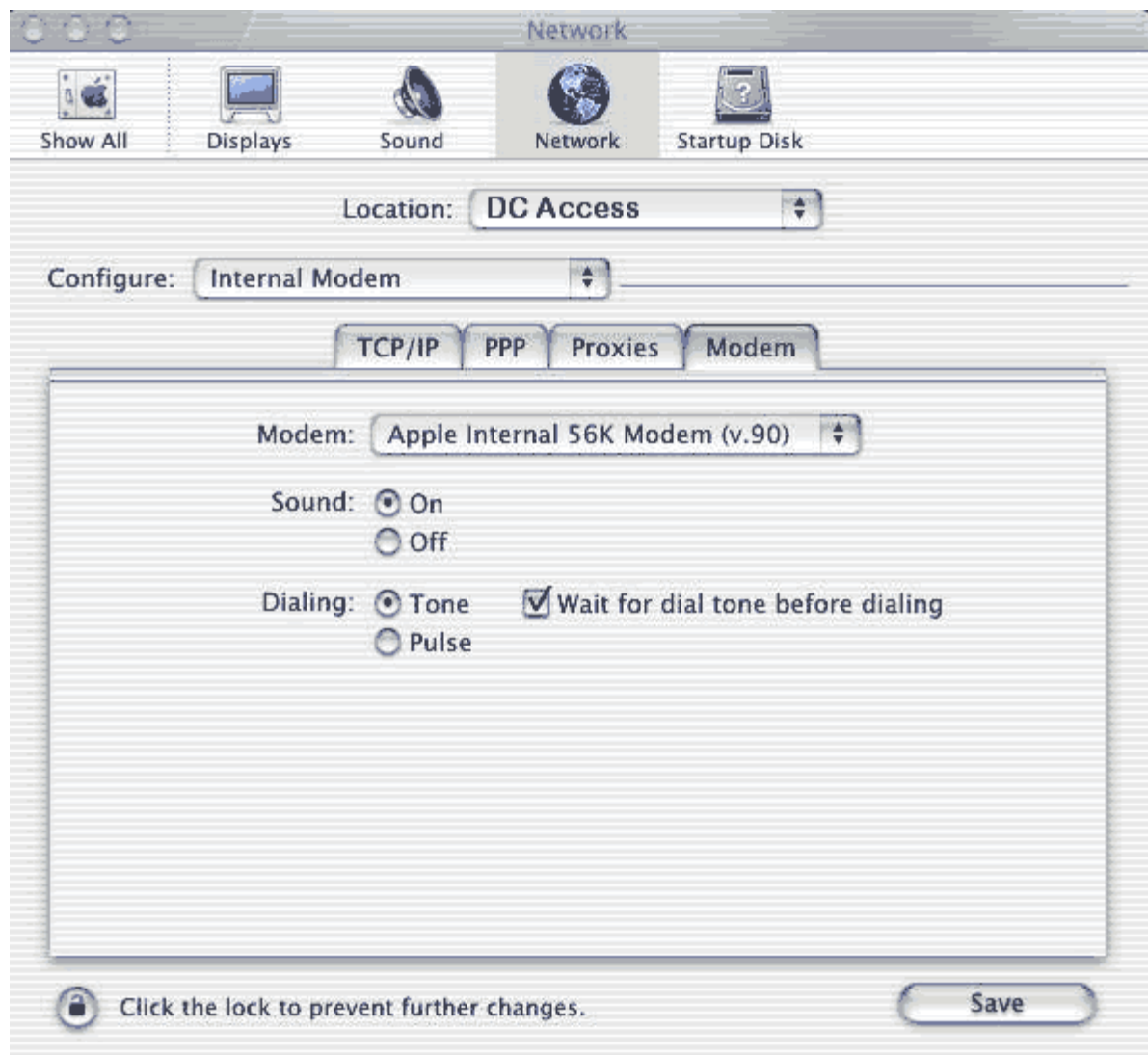
2. If there is only going to be ONE set of TCP/IP settings, leave **Location** set to **Automatic**. Otherwise, you can name your new setup something like **DC Access Dialup** to differentiate it from other setups you may use.
3. Most Macs supported by OS X will have a modem built-in. Set **Configure** to **Internal Modem**. If you are using an external modem, select the appropriate configuration option.
4. Under the **TCP/IP** tab, set the **Configure:** pop-up menu to **Using PPP**.
5. Leave the **Domain Name Servers** and the **Search Domains** fields blank, the DC Access servers will automatically fill in that information.
6. Click the **PPP** tab.



7. In the **Service Provider:** field, type **DC Access**.
8. Enter a DC Access dial in number local to you in the **Telephone Number:** box. If you want to disable call-waiting, add ***70,** to the front of the phone number.
9. The **Account Name:** field should be set to your User Name.
10. The **Password:** field should be set to the password corresponding to your User Name.
11. Clicking **PPP Options** will give you a set of further choices. The settings depicted here will work fine and are recommended; you may need to verify that the checkbox next to **Connect automatically when starting TCP/IP applications** is checked. Advanced users may want to customize certain choices under **Session Options** and **Advanced Options**, which otherwise should be left as they are currently set.



12. Verify that the default modem settings are correct under the **Modem** tab. If you are using the built-in modem, **Modem:** should be set to **Apple Internal 56K Modem (v.90)**; **Sound:** should be set to **On**; **Dialing:** should be set to **Tone**; and **Wait for dial tone before dialing** should be checked.

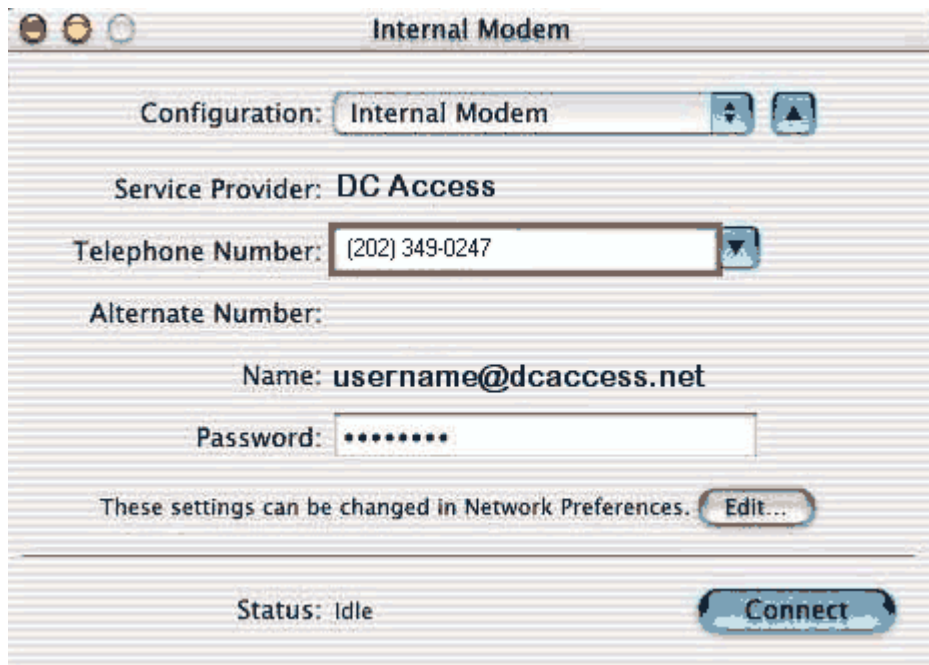


13. With Mac OS X, network settings for each network interface can be set for each location. To change the order in which OS X looks for a valid net connection, choose **Advanced** from the **Configure:** pop-up menu. Disable ports that will not be used and set the order in which ports search (from the top down) for a connection by dragging the port to the desired position.
14. Click the **Save** button to save your changes.

Configuring Internet Connect and Dialing In

*There are two different ways to start the dialing process in which your modem dials up the DC Access modem pool and establishes a PPP connection. Both methods do the same thing; one is not "better" than the other. However, if you are having problems dialing in, you might try the recommended way of dialing up, via the **Internet Connect** utility found in **Applications** . Internet Connect should be dragged to the dock for convenient access when connecting and disconnecting. Alternatively, if you checked the appropriate session option in the PPP tab above, the system should already be set up to automatically connect to the internet anytime a network connection is invoked (as when using a program using an internet connection is activated).*

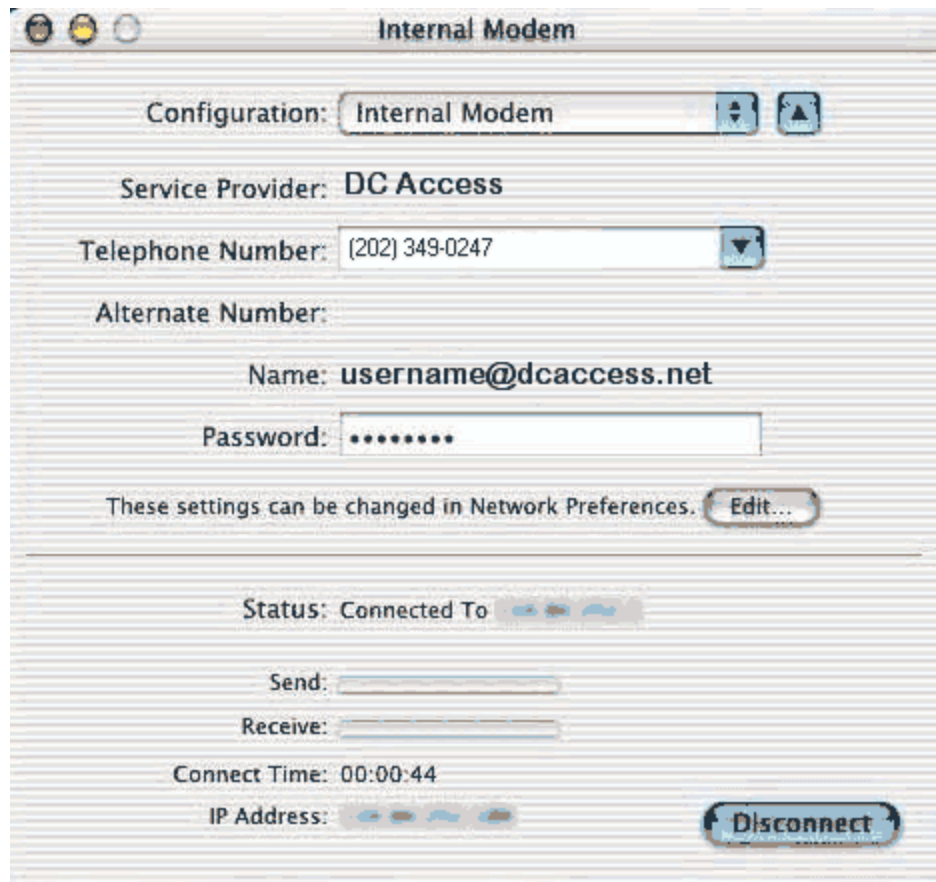
1. Open **Internet Connect**, and click the **Connect** button.



Please note that the **Disconnect** button is not a prompt, but rather indicates that you are in fact connected. Only click this button when you want to end your modem session.

Hanging up

1. Open the **Internet Connect** utility if it is not already open in the background.
2. Click the **Disconnect** button. This should hang up your modem.



[[Back to Main Welcome Page](#)]

Copyright (c) DC Access, 2002